



LIVEWELL KERSHAW COALITION KICKOFF MEETING AUGUST 30, 2017



**Healthy People
Healthy Carolinas**

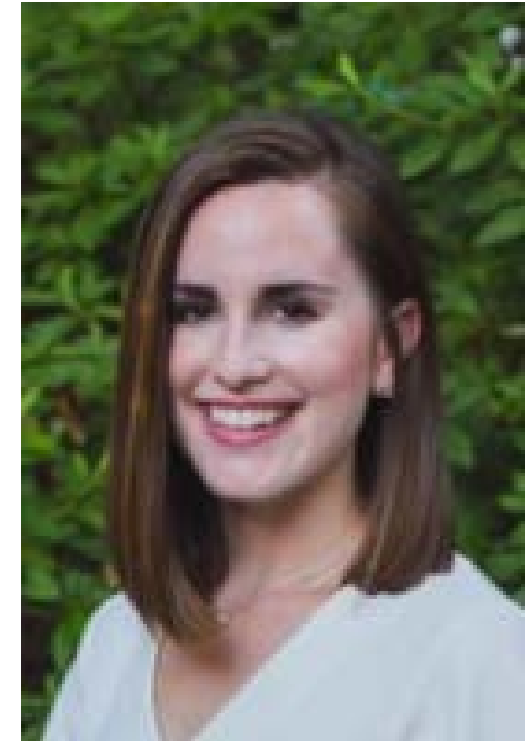
AGENDA

- Welcome and Introduction
- Overview of LiveWell Kershaw 2014-2017
- Vision 2030
- Overview
 - *Healthy People, Healthy Carolinas*
 - Year 1 Expectations
- What's Next?
- Coalition Member Commitment

INTRODUCTION

Kathryn Johnson, MPH LiveWell Kershaw Coalition Director

- **Hometown:**
 - Aynor, South Carolina
- **Education:**
 - 2016: Masters of Public Health in Health Services Policy and Management
 - 2015: Bachelor of Arts in Public Health
- **Background:**
 - Healthcare Evaluation



OVERVIEW OF LIVEWELL KERSHAW



OVERVIEW OF LIVEWELL KERSHAW

- Funded through legislative proviso and coordinated by the Department of Health and Human Services
- **Three year contract**
 - May 1, 2014 – June 31, 2016
- **Focus:**
 - Northeastern portion of Kershaw County
 - “Hot spot”



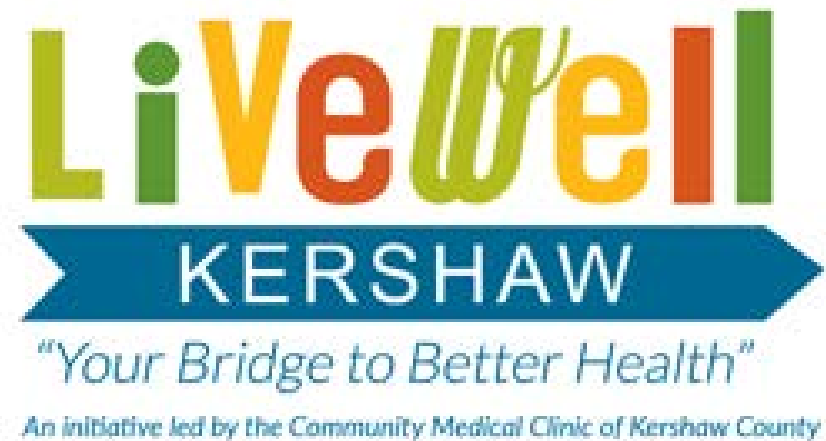
OVERVIEW OF LIVEWELL KERSHAW

- **Three strategies:**
 - Satellite sites established
 - School-Based Health Center
 - Community Outreach



OVERVIEW OF LIVEWELL KERSHAW

- **Economic impact:**
 - 24-25% reduction inpatient hospitalizations and ED utilization among cohort
 - \$7,714 saved for every inpatient hospitalization avoided by using LWK Care Coordination team



OVERVIEW OF LIVEWELL KERSHAW

- **Number of individuals served:**
 - 2,471 patients
 - 4,749 encounters
 - 608 connected to medical home



MAINTAINING OUR MOMENTUM

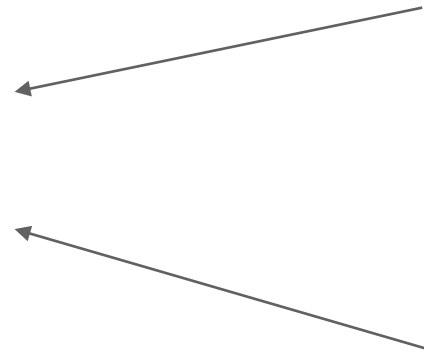


NEW FUNDING FOR LIVEWELL KERSHAW EFFORTS



"Your Bridge to Better Health"

An initiative led by the Community Medical Clinic of Kershaw County



**Healthy People
Healthy Carolinas**



**Institute for
Healthcare
Improvement**

HEALTHY PEOPLE, HEALTHY CAROLINAS, AN INITIATIVE OF THE DUKE ENDOWMENT

Goal:

Aims to improve community health and health outcomes— focusing specifically on nutrition, physical activity, and prevention of chronic disease.

HEALTHY PEOPLE, HEALTHY CAROLINAS, AN INITIATIVE OF THE DUKE ENDOWMENT

How?

- Implementation of quality improvement methods
 - Application of evidence-based interventions
 - Policy changes
 - Participation in peer-learning collaborative
 - Technical assistance provided

SCALE 2.0

INSTITUTE FOR HEALTHCARE IMPROVEMENT

Goal:

Working collaboratively across sectors to address the health challenges we face as a community

How?

Provide tools and trainings to support community-wide transformation through Scale-and-Spread.

Additional layer of support that will compliment *Healthy People, Healthy Carolinas* goals

HEALTHY PEOPLE, HEALTHY CAROLINAS, AN INITIATIVE OF THE DUKE ENDOWMENT

Year 1 Goals

- ✓ Hire coordinator
 - Started July 10th, 2017
- ✓ Complete Community Health Needs Assessment
 - Completed in April 2014
- Develop Community Health Improvement Plan
- Select Evidence Based Interventions
- Meaningful Communication



vision**kershaw**

2030

KERSHAW COUNTY SOUTH CAROLINA





KERSHAW VISION 2030

Goal:

Transform the Way Kershaw County Citizens Think
and Act to Improve Healthy Outcomes

KERSHAW VISION 2030

Objective 1: Provide an environment that promotes a healthy life

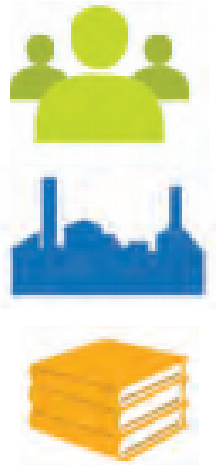
Strategies	<ul style="list-style-type: none">a. Empower individuals to improve their own health through responsible choicesb. Develop partnerships between education and healthcare providers to deliver health, exercise, and nutrition education programsc. Develop partnerships with businesses, public servants, Veteran's Affairs, and others to deliver health and nutrition education programsd. Provide a safe physical environment in which children thrivee. Expand access to locally grown food sources and local dining optionsf. Eliminate food swamps and food deserts (places where access to healthy food options is limited or non-existent)g. Support creation of accessible indoor and outdoor spaces for physical activity	   
------------	---	--

KERSHAW VISION 2030

Objective 2: Sustain a network of integrated and effective health and human services across the County


Strategies

- a. Deliver emergency services quickly and efficiently throughout the County
- b. Collaborate with state and federal entities to address causes of poor health, premature death, and injury, and apply directed responses
- c. Engage employers and businesses to improve workforce health and wellbeing
- d. Build the healthcare workforce by engaging students and youth as leaders of change
- e. Ensure access to primary healthcare for all



KERSHAW VISION 2030

Objective 3: Connect underserved and vulnerable communities to the resources that support their health and well-being

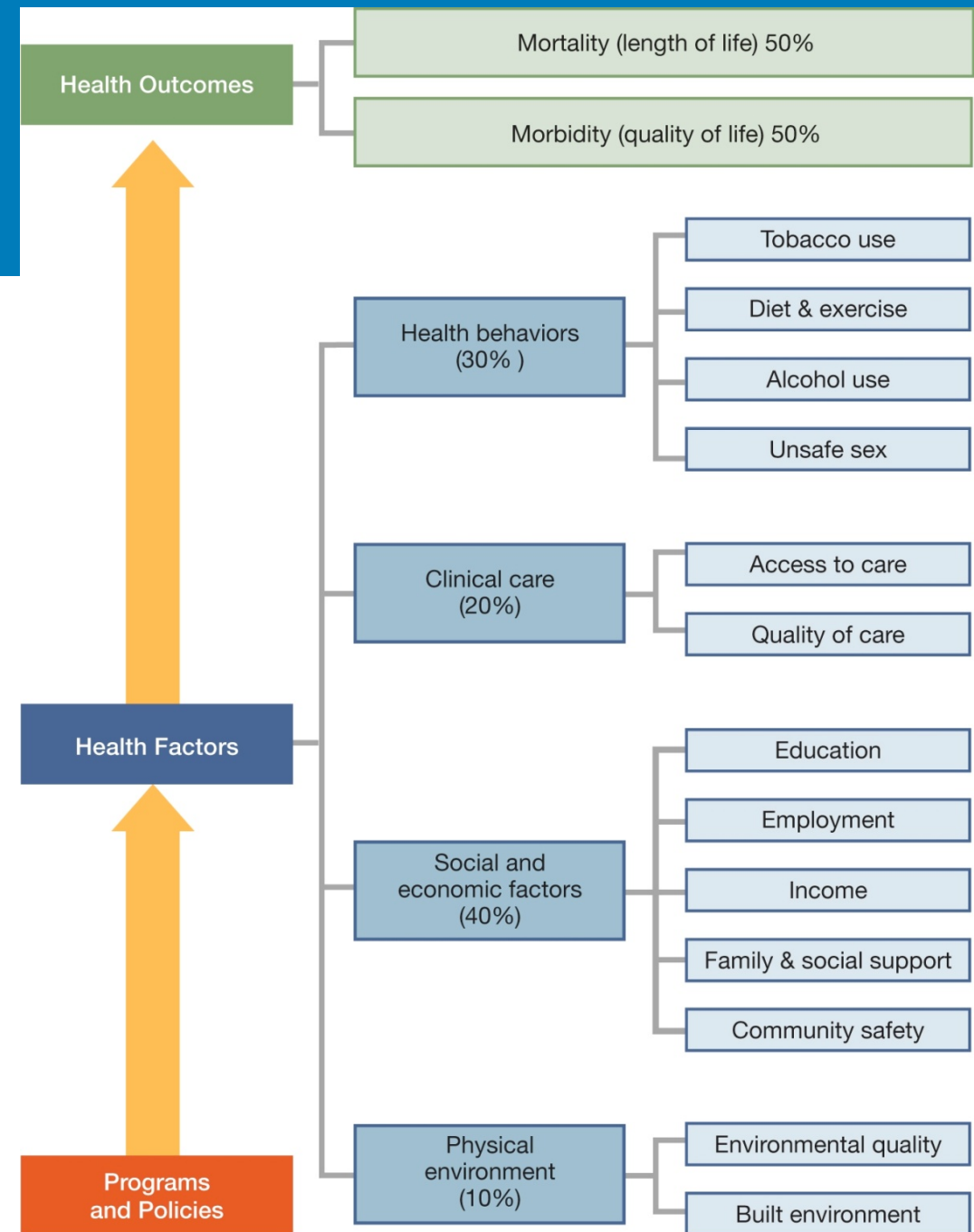
Strategies	<ul style="list-style-type: none">a. Eliminate administrative barriers to healthcare without jeopardizing integrity or qualityb. Ensure collaboration between social service providers active in the communityc. Address mental and behavioral health alongside physical health across the continuum of cared. Promote reliable, safe, and cost effective transportation to meet the needs of vulnerable and underserved populations	
------------	---	--

SO WHAT?

How does the work of the LiveWell Kershaw Coalition align with your organization's goals?

THINGS TO THINK ABOUT...

What areas can your organization influence/address?



SOCIOECOLOGICAL MODEL



NEXT STEPS

- **Determine our priorities based on the Community Health Needs Assessment**
- **Follow-up meetings and sense-making session**
- **Workgroups developed**

COALITION MEMBER COMMITMENT

Please review, sign, and place your commitment letter in the box.





Contact Information:

Kathryn Johnson, MPH
kjohnson@cmcofkc.org
803-814-6331



With support from
Healthy People, Healthy Carolinas
An Initiative of The Duke Endowment